



PARENT BULLETIN | 22ND NOVEMBER, 2024

SCHOOL NEWS

CLASS UPDATE

Maple Class



What a busy start to the second part of the Autumn term in Maple Class! We have had great fun exploring different foods through our senses and creating shopping lists in our English lessons. In our independence lessons, we have been using the foods that we have explored, and focused on our cooking skills by following our recipes to make a range of exciting and fun foods including; bear on toast, crunchy rainbow pasta salad and pink pancakes!

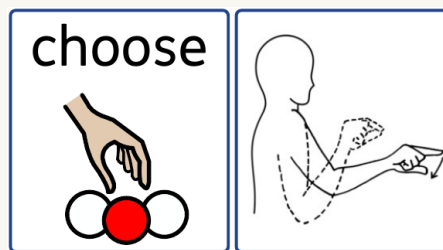
MESSAGE FROM HEAD OF SCHOOL

I have enjoyed carrying out formal lesson observations over the past two weeks where we have spent longer periods of time in classes. It always humbles me to see the trusting relationships between staff and students, and how they respond to one another. All of the lessons I have seen have added to the functional skills of the students and will support their learning for life.

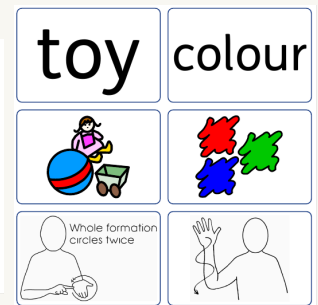
It's been exciting talking with classes about their projects for the our Christmas and Winter fayres. A few students have talked to me about coming to see Santa, but one said that they tried to book for 30th November and it was full. It might not be obvious when you log onto the site, but there are three time slots and there is availability in the slots starting at **12.30 and 2pm**. Two of our staff will be dressing up as elves so they will be familiar faces to the students.

Rhonda Gosney

SIGN OF THE WEEK



Core Word



Additional Words

WEEKLY BEHAVIOUR TIPS

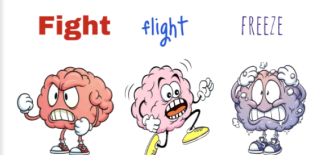
Stress Responses - Be a Detective

When children are stressed, their behaviour tells us. We need to work together to find out why...

FIGHT - aggression, swearing, demanding control, non-compliance, oppositional defiance, moving towards what is threatening, irritable, angry

FLIGHT - wanting to run away/escape, fidgety, hyperactive, anxious, panicked, overwhelmed, preoccupied by everything but the thing, unfocused/poor attention

FREEZE - shutting down, self-isolation, verbally unresponsive, zoned out/day dreaming, unable to move-feeling stuck





PARENT BULLETIN | 22ND NOVEMBER, 2024

SCHOOL NEWS

SCHOOL MEALS



SCHOOL MEAL ORDERING FOR NEXT HALF TERM:

The Arbor school meals ordering window will **OPEN at 12noon on Monday 25th November** to order all school meals for the next half term (Wednesday 8th January to Friday 14th February 2025)

Please access your school meals via the Arbor App or the online Arbor Portal to order your meal choice for your child's school meals

The menu is available from our website - [click here](#) to view. You can also view guidance notes for the Arbor system here.

You can choose any meal for any day. Payment of £3.00 per meal is to be paid via the Arbor App or Portal

The meal ordering window for next half term CLOSSES at 12noon on Monday 9th December 2024

Any child without an ordered meal WILL BE REQUIRED to have a HOME SUPPLIED packed lunch

MASKS WINTER FAYRE



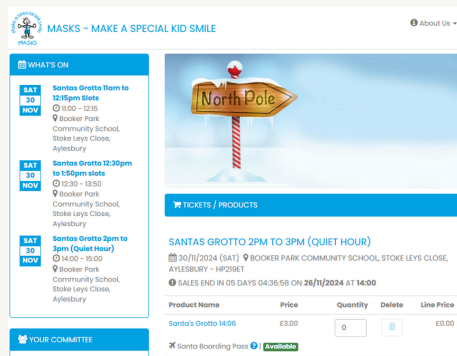
The MASKS team are looking forward to welcoming you to the annual Winter Fayre! A **reminder** that raffle tickets are still available to buy. At only £1 a ticket, you have a chance at winning some fantastic prizes!

Thank you to those who have booked slots for Santa's Grotto. There are still slots available from **12:30pm** onwards so please visit;

<https://www.pta-events.co.uk/thevalefederationcom/index.cfm> to book.

The image below shows that there are three sessions. As the first one has sold out you will need to select either the **12:30pm to 1:50pm** slot or the **2pm to 3pm** quiet hour slot. We are also looking for help with manning stalls, setting up for the event and tidying away afterwards. If you are able to help us in any way, please complete this form: <https://forms.office.com/e/UyWsUgzK2Uand>

Thank you for your support.



Thank you to everyone who has donated towards this year's Christmas Winter Fayre. We are still collecting donations of bottles and chocolates for the tombolas and any unwanted gifts. If anyone has a few spare hours to help set up, run a stall or tidying it would be gratefully received.

Every year we aim to raise money to enable activities and projects to happen within the federation. In the Summer MASKS funded the leavers events at both Booker Park and Stocklake Park. We have committed £20,000 to towards sheltered outdoor areas, split between in Early Years and the Stocklake playground. We will also be funding a Preparation for Adulthood event to which all parents and carers are welcome.

We are extremely grateful for your continued help and support and aim to keep you up to date with any other projects.

The MASKS committee



PARENT BULLETIN | 22ND NOVEMBER, 2024

SCHOOL NEWS

SCHOOL CALENDAR



Monday 25th November
School Meals ordering open at
12noon

Thursday 28th November
Panto – Cinderella (all day)

Saturday 30th November
MASKS Winter Fayre – at Booker Park School

Thursday 12th December
Christmas Lunch & Christmas Jumper Day

Thursday 19th December
Royal Latin School – Christmas Santa Visit

Friday 20th December
Last day of Term – Christmas Holidays

RSE TOP TIPS

Relationships & Sex Education



Healthy Minds

Phrases you could use to help your child develop and maintain a positive mindset, even when things get tricky...

- I can do hard things
- It's ok to try again
- I tried my best
- I am learning to...
- I can ask for help
- I can try a different way

Although not all of our pupils will use these phrases themselves, using the phrases with them will still support them and encourage them to keep trying. The repetitive nature of this will mean that your child will become accustomed to hearing these phrases and the positive attitude that accompanies them, therefore supporting them to have a positive outlook.

USEFUL INFORMATION

As we approach the winter months water safety is still of paramount importance. Accidents are mostly preventable with the correct knowledge and judgement. Here are top tips from Bucks School Swimming, for staying safe in water this winter.



Have a great weekend.

Bradley Taylor, Principal
Stocklake Park School, Stocklake, Aylesbury, Buckinghamshire, HP20 1DP