



PARENT BULLETIN | 29TH NOVEMBER, 2024

# SCHOOL NEWS

## Oak Class Christmas Enterprise projects

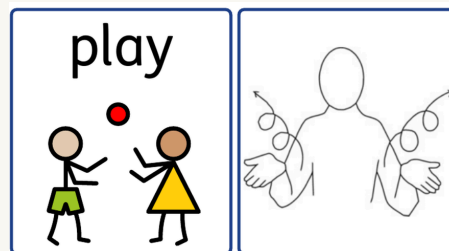


## MESSAGE FROM HEAD OF SCHOOL

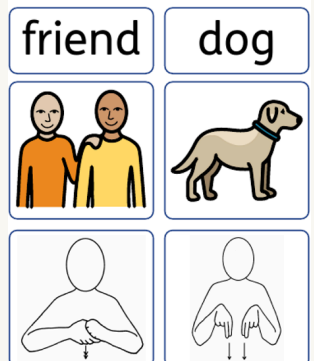
It has been great to see some of the Christmas Enterprise projects that have been going on in classes. These sets of penguin gift tags are an example from Oak class, one of our classes with students who have complex needs. The crafts that have been made will be sold on Saturday at Booker Park as part of the MASKS Winter Fayre, and at the Stocklake Christmas Fayre on 13th December. We hope to see you at these events.

**Rhonda Gosney**

## SIGN OF THE WEEK



**Core Word**



**Additional Words**

## WEEKLY BEHAVIOUR TIPS

STRATEGIES TO TRY TO PREVENT YOUR CHILD'S BEHAVIOUR ESCALATING

Change of face	Visual supports	Distraction	Give choices	Speak calmly	Reduce language
Change of environment	Increase processing time	De-escalation (an additional or alternative strategy implemented when a child's behaviour starts to escalate) Remember; Be aware of your own body language, stance, the tone and volume of your voice. Be Low Arousal.	A movement break	Sensory strategies	Give personal space
Remove the trigger	Humour		Deep breathing	Give	
Avoid saying no	Get down to child's level	Decrease stimulation	Respond only to questions	A friendly escort	Validate their feelings



PARENT BULLETIN | 29TH NOVEMBER, 2024

# SCHOOL NEWS

## SCHOOL MEALS



### SCHOOL MEAL ORDERING FOR NEXT HALF TERM:

- The Arbor school meals ordering window is now **OPEN** to order all school meals for the next half term (Wednesday 8th January to Friday 14th February 2025)
- Please access your school meals via the Arbor App or the online Arbor Portal to order your meal choice for your child's school meals
- The menu is available from our website - [click here](#) to view. You can also view guidance notes for the Arbor system here.
- You can choose any meal for any day
- Payment of £3.00 per meal is to be paid via the Arbor App or Portal
- **The meal ordering window for next half term CLOSES at 12noon on Monday 9th December 2024**
- Any child without an ordered meal WILL BE REQUIRED to have a HOME SUPPLIED packed lunch

## PARKING



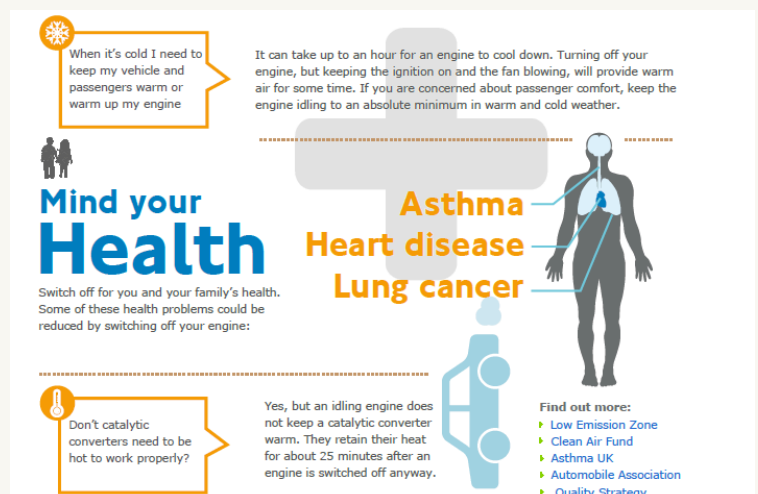
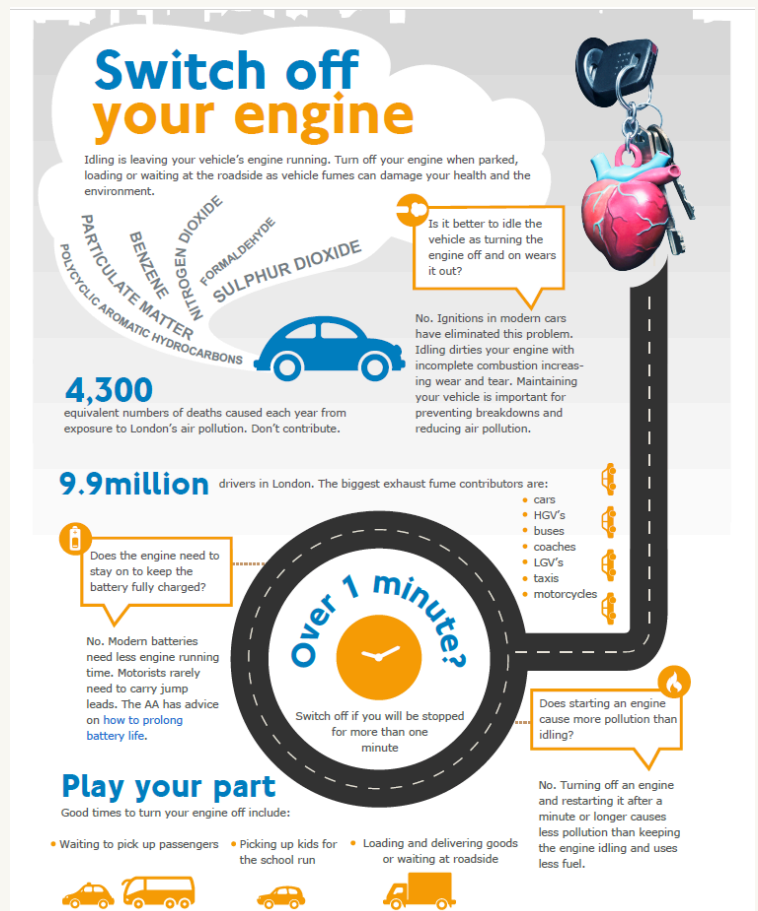
As a School, we are receiving an increasing number of complaints from local residents regarding the stopping, parking and driving standards of those dropping off and collecting students from school.

This includes blocking driveways, dangerous stopping points blocking roads and access to homes and driveways.

Please can we ask everyone to be respectful to our local residents, to the school and always adhere to the road traffic laws regarding parking, stopping and general driving. Thank you.

## FAMILY SUPPORT CORNER

Please see below information and guidance on switching off your engine when parked.





PARENT BULLETIN | 29TH NOVEMBER, 2024

# SCHOOL NEWS

## ELECTRIC SCOOTERS

Message from Jo Howland  
Police, Neighborhood Administrator



Dear Parents and Guardians,

You may know someone who has an e-scooter at the top of their wish list this Christmas 🎁. Whilst many retailers are now advising the law around e-scooters at the time of buying, we also want to make sure that you know the laws before committing to a big purchase 🛒.

E-scooters are classed as motor vehicles under the Road Traffic Act 1988, which means you need to have a license and insurance to ride one in public.

It's not currently possible to get insurance for privately owned e-scooters. This means it's illegal to use them on the road or in public spaces, such as parks, street pavements, and shopping centres.

If you use a privately-owned e-scooter in public, you risk the vehicle being seized under S.165 Road Traffic Act 1988 for having no insurance.

Find out more on our website:

<https://www.thamesvalley.police.uk/advice/advice-and-information/rs/road-safety/advice-escooters/>

Did you know it's illegal to ride a privately owned electric scooter (e-scooter) in public?



That's because e-scooters are classed as motor vehicles in law. So, in theory, this means that you need an MOT, road tax and insurance to use one, however it isn't currently possible to register e-scooters in this way.

Privately owned e-scooters can only be used on private land, with the permission of the landowner.

You cannot use a privately owned e-scooter on the road, pavement or in a public space. If you do then you risk receiving a large fine, points on your driving licence and your e-scooter could be seized.

Some parts of the UK are running government trials of rental e-scooters. If you're over 16 and have a full or provisional driving licence, then you can use these on public roads and cycle paths.

Just check that your driving licence covers categories AM, A or B.



## RSE TOP TIPS

### Relationships & Sex Education



#### Healthy Body

It's important for your child to keep their body healthy by moving regularly each day. You could support them to do this by completing their physio programme each day, creating a circuit in your living room to complete with your child, go for a walk in the local area, dance to their favourite music with them, play a game of chase or participate in rough play (if appropriate for your child!).

## USEFUL INFORMATION

Below you can find information on various activities taking place in and around the Aylesbury area.

**FREE MEAL**

*Christmas*  
**COMMUNITY MEAL**

**CHRISTMAS MEAL, A MINCE PIE AND A DRINK**

JOIN US FOR A FESTIVE GATHERING FILLED WITH DELICIOUS FOOD, GOOD COMPANY, AND HOLIDAY CHEER. EVERYONE WELCOME!

**DECEMBER 17TH**  
**12:30 TO 14:30**

PEBBLE BROOK COMMUNITY CAFE, HANNON RD, AYLESBURY HP21 8TJ

BOOK BY SCANNING QR CODE OR CALL PEBBLE BROOK CAFE ON 07500 845420



PARENT BULLETIN | 29TH NOVEMBER, 2024

# SCHOOL NEWS



## SWIMMING SESSIONS

**EXCLUSIVELY FOR CHILDREN WITH SPECIAL EDUCATIONAL NEEDS & DISABILITIES**

- Neil's SEND Swim School provides swimming sessions exclusively for children with SEND.
- Our teachers are trained, qualified and experienced in working with children with SEND.
- We hire whole swimming pools just for our SEND children so its private and peaceful.



**CONTACT US**  
FOR DETAILS

**WE HAVE WEEKLY SEND SWIMMING SESSIONS:**  
**Aylesbury – Coming Soon**

**CALL OR MESSAGE 07427240156**  
**WWW.NEILSSWIMSCHOOL4ALL.CO.UK**

## SCHOOL CALENDAR



### **Monday 9th December**

School Meals ordering closes at 12noon

### **Thursday 12th December**

Christmas Lunch & Christmas Jumper Day

### **Thursday 19th December**

Royal Latin School – Christmas Santa Visit

### **Friday 20th December**

Last day of Term – Christmas Holidays

**Have a great weekend.**



**Bradley Taylor, Principal**

**Stocklake Park School, Stocklake, Aylesbury, Buckinghamshire, HP20 1DP**