



PARENT BULLETIN | 16TH MAY, 2025

SCHOOL NEWS

SCHOOL CALENDAR



Monday 13th to 20th May
Mental Health Awareness Week

Wednesday 21st May
Electric Umbrella

Friday 23rd May - Half Term
Half Term Holiday: 26th to 30th May
*School closes Friday 23rd May at 3.15pm and
re-opens on Monday 2nd June at 9.00am*

Monday 2nd June
Students return to School

Thursday 5th June
World Environment Day - Upcycling/Washing
up toys

Wednesday 18th June
Parent's Evening

Friday 20th June
Summer Jam

Saturday 21st June
World Music Day

Friday 18th July
6th Form Leavers Prom

Wednesday 23rd July - Last day of Term

MESSAGE FROM HEAD OF SCHOOL

It has been lovely to see some of you in school this week for our Sports Days. It was great to see so many in team colours. Please can I remind you that if you did take any photos of your child, not to share photos on social media, as there may be other students in the background.

I appreciate that parking is difficult at the end of the day - please can I ask that if you are using the bottom car park you don't park near the MUGA gate. There are some spaces left clear so that cars can get around that side of the car park, allowing everyone to exit the car park so others can come in. Thank you.

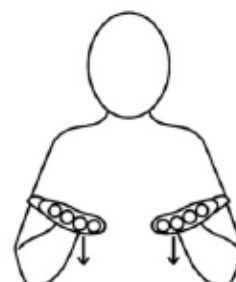
We have the school photographer in on **Thursday 5th June** - we are hoping that the lovely weather continues so that we can catch more natural photos of the students outside.

Rhonda Gosney

SIGN OF THE WEEK

Core Words

now





PARENT BULLETIN | 16TH MAY, 2025

SCHOOL NEWS

CHARITY FUN DAY

Join us for a jammed packed day of exciting sports and fun games on **Saturday 24th May**. See the below flyer for details. If you are able to donate prizes for our Tombola that would be greatly appreciated, please send them to school by **Friday 23rd May**.

24 HOUR BADMINTON MARATHON RAFFLE – RAISING MONEY FOR AN ADAPTIVE TRIKE

Kristen Rutson, who works across The Vale Federation, is (once again) organising a 24 hour Badminton Marathon to raise money for an adapted Trike at the school. If you are able to buy (or sell) some raffle tickets, please place any money in a **sealed envelope, clearly marked Raffle tickets with your child's name and class**. Children and parents are very welcome to attend – as you'll see, there is going to be lots to see and do. To make payments or donations you can scan the QR code above or use the following link: <https://buy.stripe.com/9AQeVXgscam74O49AB>



Have a great weekend.

Bradley Taylor, Principal

Stocklake Park School, Stocklake, Aylesbury, Buckinghamshire, HP20 1DP