



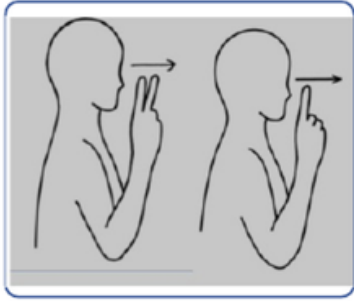
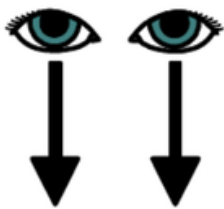
PARENT BULLETIN | 28TH MARCH, 2025

# SCHOOL NEWS

## SIGN OF THE WEEK

Core Word

look/see



## SCHOOL CALENDAR



**Wednesday 2nd April**  
World Autism Awareness Day

**Friday 4th April - Last day of term**  
End of Term: Easter Holidays 7th to 22nd April

School closes Friday 4th April at 3.15pm and re-opens on **Wednesday 23rd April at 9.00am**  
(Tuesday 22nd April is an INSET Day)

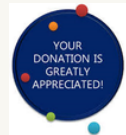
## MESSAGE FROM HEAD OF SCHOOL

This week I visited another specialist school which has been rated outstanding with Ofsted. Even as adults, we are always learning and it was a great opportunity to share best practice. I was really pleased to see very similar approaches to working with students, especially using Intensive Interaction and AAC. I was really pleased to be walking around thinking "we do that too".

Could you run a Marathon? I know that I couldn't but that's exactly what Denyse is doing. On 6th April, she will be challenging herself with the Brighton Marathon to raise money for MASKS towards buying a Drive Deck to support students across the Federation. If you would like to see more information about this, or you would like to sponsor Denyse please see the article below. With one week before the Easter break you may be planning what you are going to do. Please do speak to your child's class team if there are symbols or resources that can support with this.

**Rhonda Gosney**

## RUNNING TO RAISE MONEY - DRIVE DECK



Denyse is running a very long way to raise money for a drive deck! Denyse (from Stocklake Park School) will be "running" (walking/crawling) the Brighton Marathon on the 6th of April to support MASKS with raising money for a drive deck. Many of our children are wheelchair users and are reliant on their carers to help them access their environment. A Drive Deck enables wheelchair users to gain vital independence skills in mobilising and accessing their environment. The Drive Deck is designed to enable access to powered mobility through the comfort of their own supportive seating system. It can be set up to meet each individual child's needs and access abilities, making it a powerful motivational tool to support the development of independence skills, sensory processing, social skills and community involvement. Due to the NHS's limited funds, they do not provide powered mobility unless there is evidence to prove safe and capable powered mobility skills. The Drive Deck provides us with vital evidence to support the provision of powered mobility, enabling our children to have life changing opportunities for a more independent future. The Drive Deck recently appeared on the BBC documentary "A Special School" - <https://www.smileSMART-tech.com/drivedeck-featured-on-bbcs-a-special-school>.

Any donation will be greatly appreciated no matter how small. You can donate here: [https://www.justgiving.com/page/denyse-craig-1?utm\\_medium=FR&utm\\_source=CI](https://www.justgiving.com/page/denyse-craig-1?utm_medium=FR&utm_source=CI)

Please share the link to your social media pages and any companies that may be able to help with a donation.



Have a great weekend.

**Bradley Taylor, Principal**  
Stocklake Park School, Stocklake, Aylesbury, Buckinghamshire, HP20 1DP