



APRIL 2025

# NEWSLETTER

## Message from the Principal

This half term always sees a lot of exciting activities, with World Book Day and Comic Relief to name but two. It is great to see the children and young people's engagement in these events, and there are lots more fun and games to come in the summer term with sports day and end of term activities.

I have greatly enjoyed seeing a lot of lessons over the past 6 weeks or so, and there is a common theme of great relationships between our staff and the children. There have been some wonderful examples of great engagement from our youngsters, including data handling via an Easter treasure hunt, using switches independently to create bubbles, and Intensive Interaction to illicit laughter and social interplay with an adult. I hope you have managed to discuss and contribute to your child's progress this term through Parents' Evening, and we look forward to further successes in the summer term.

**Bradley**



**Bradley  
Taylor**  
Principal

**Enjoy our newsletter offering this time around and please do give us feedback for how you might like to see it develop. Please send all feedback to either [office@bookerpark.bucks.sch.uk](mailto:office@bookerpark.bucks.sch.uk) or [office@stocklakepark.bucks.sch.uk](mailto:office@stocklakepark.bucks.sch.uk)**

# Booker Park

## Message from the Head of School

It has been good to see some sunshine over the past few weeks. We do get outside whatever the weather, but it is lovely to be able to do so with a bit of warmth! We've enjoyed a busy term, and in particular the learning taking place around World Book Day and Comic Relief has been engaging and exciting.

We see Jo the school nurse leaving us today and would like to thank her for the positive contribution she has made during her time here. We hope to be able to update you with news of a new school nurse soon.

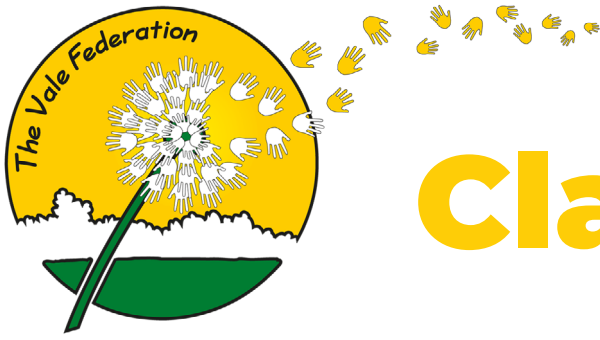
Thank you as always for your ongoing support.

**Marianne**



**Marianne  
Murphy**  
Head of School





# Class Updates

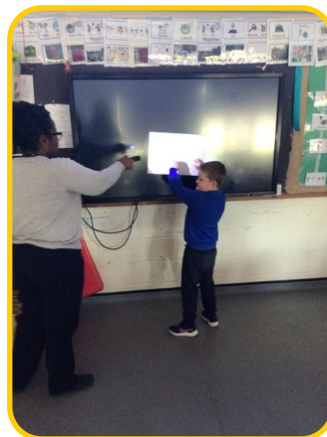
## Goldfinch Class

Within our Learning Through Play sessions, Goldfinch class have been enjoying exploring 'The Tiger Who Came to Tea' story. Within the session the children enjoy listening to the story before setting up their own cafe. Within the set up they ensured the area in which they were working in was clean, and that their hands were clean and ready to touch food. Every week we have been focusing on a different healthy snack. The children followed some instructions in order to create their snack. They then sat and enjoyed eating it, whilst they communicated with one another.

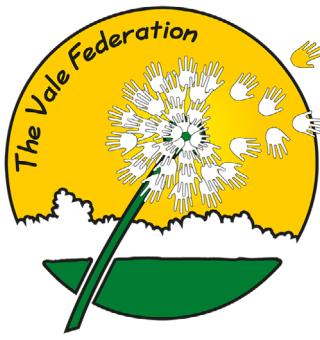


## Swan Class

This term in outdoor learning we have been looking at shadows.







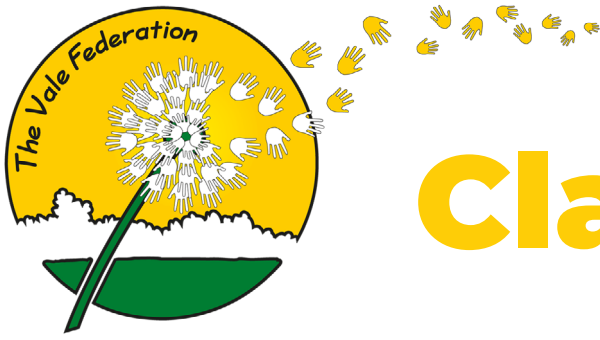
# Class Updates

## Wren Class

Wren class have enjoyed using their hands and have made their own independent marks in a variety of sensory media this term. We have explored paint, icing sugar, yogurt, and also compost, sand and bird seed as part of outdoor learning activities. Some children have also made marks in playdough by squeezing it, or pushing their fingers into it. It has been lovely to see the children all engaged with their mark making activities. Some of their work has made some lovely displays in the classroom.







# Class Updates

## Firecrest Class

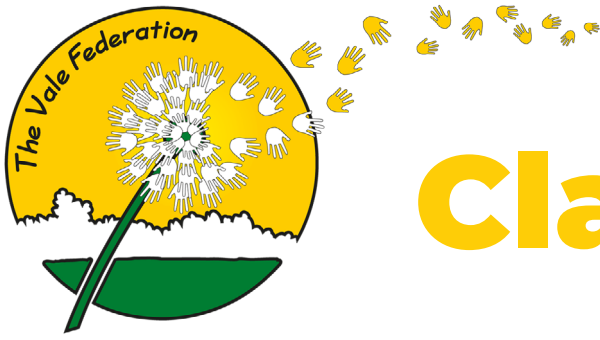
This term in Firecrest class we have been very busy and enjoyed lots of special days. One of our favourites was Red Nose Day. We had a day full of red fun! We enjoyed designing our own red noses, played with red rice, red tissue paper, did a fine motor session with red coloured sensory bags, and everything we played with was red!! The children had lots of fun.



## Blackbird Class

In Blackbird class we have had fun this term with traditional tales. Our favourite was 'The Three Little Pigs'. We loved acting it out, building houses, huffing and puffing to blow the houses down and making the big bad wolf run away.





# Class Updates

## Heron Class

Over the last term, during our creativity sessions the children in Heron class enjoyed making pancakes for Pancake Day. The class went to the kitchen over in the East Wing of the school to allow them to experience a full kitchen set up. With the support of the class adults the children explored pouring and mixing the ingredients and watching the pancakes take shape. A class adult cooked the pancakes whilst the children watched. The best bit was eating the pancakes. The children really excelled at this!

In addition to pancake making, the class have also made some beautiful cards for Mother's Day, each with a picture of themselves as a special touch for mum. We celebrated Ramadan by making multi-coloured lanterns to hang. The children particularly enjoyed the coloured pieces of paper which they enjoyed throwing like confetti!







# Stocklake Park

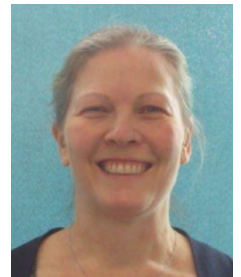
## Message from the Head of School

As most of you know, my office is next to the playground and this week I have seen an increasing number of students engaged in learning outside. Over the Easter holidays we are having some of the playground resurfaced and a new sheltered gazebo area with tables and seating so that outdoor learning can happen come rain or shine. We are also having the old sensory panels replaced. Money that has been raised through the MASKS charity is enabling this to happen.

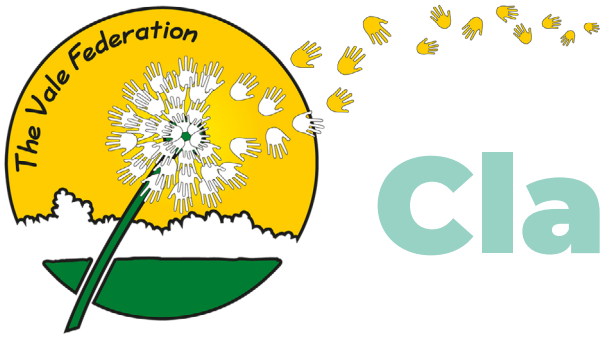
At a number of annual reviews I have been asked about setting up clinics in school, and we have been working on making this happen. Dr Gosney from CAMHS is now coming in regularly to review medication and there have been a number of vaccination clinics and a dental screenings. I know that pre-covid there used to be Paediatrician clinics so if your child still has one, please let me know who this is and I will contact them about coming into school.

I hope that you have a lovely Easter break.

**Rhonda**



**Rhonda  
Gosney**  
Head of School



# Class Updates

## Cherry Class

Everyone in Cherry class has had a fantastic time celebrating Chinese culture, stories and traditions. We have listened to the music, smelt the spices and told the story of how the Chinese New Year animal won their places in the race. After Easter our topic will change and we will be off to explore the Galaxy when we start our 'Adventure in Space'.

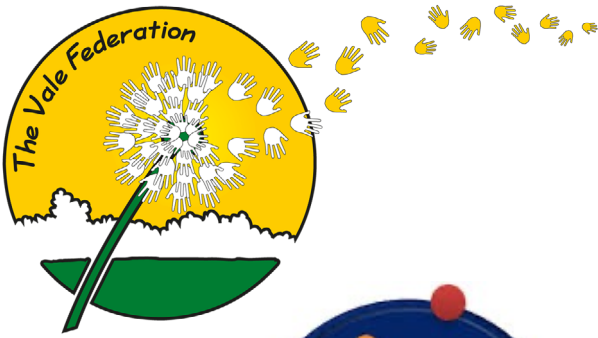
We work hard on our communication skills, using AAC technology including eye gaze devices and voice output switches every day. It's important to us that our students' voices are heard and their choices respected.

Cherry Class has had a great term, and we are looking forward to the summer, where we will meet up with friends from Booker Park for a joint Sports Day and outings.

Happy Easter everyone!







## Denyse is running a very long way to raise money for a Drive Deck



### What I am doing:

Running, walking, crawling the Brighton Marathon on 6th April 2025.

### How you can help:

Sponsor me by clicking on the link.

[https://www.justgiving.com/page/denyse-craig-1?utm\\_medium=FR&utm\\_source=CL](https://www.justgiving.com/page/denyse-craig-1?utm_medium=FR&utm_source=CL)

Share the link to your social media pages and any companies you feel would donate.  
Support and motivate me with words of encouragement.

### What I am raising money for:

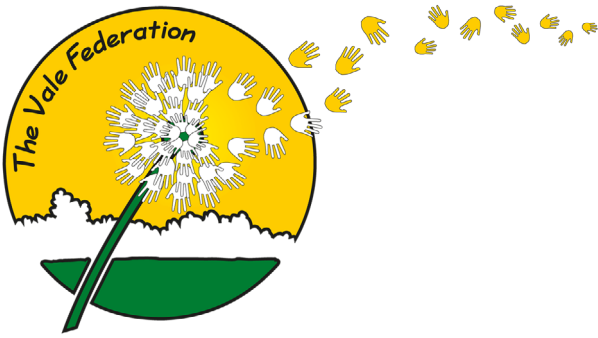
Many of our children are wheelchair users and are reliant on their carers to help them access their environment. A Drive Deck enables wheelchair users to gain vital independence skills in mobilising and accessing their environment.

The Drive Deck is designed to enable access to powered mobility through the comfort of their own supportive seating system. It can be set up to meet each individual child's needs and access abilities, making it a powerful motivational tool to support the development of independence skills, sensory processing, social skills and community involvement.

Due to the NHS's limited funds, they do not provide powered mobility unless there is evidence to prove safe and capable powered mobility skills. The Drive Deck provides us with vital evidence to support the provision of powered mobility, enabling our children to have life changing opportunities for a more independent future.

The Drive Deck recently appeared on the BBC documentary "A Special School"

<https://www.smilesmart-tech.com/drivedeck-featured-on-bbcs-a-special-school/>



## Case study:

Jack is a wheelchair user at our school. He has a diagnosis of Cerebral Palsy and needs to use specialist seating. He relies on an adult or helper to take him everywhere he goes, however, the Platform/ Drive Deck has enabled Jack to access parts of the school independently using switches. Jack has now been prescribed his own powered wheelchair which he drives himself using head switches. Jack now has an element of freedom that he previously did not have. The Platform/ Drive Deck has been an integral part in his journey.







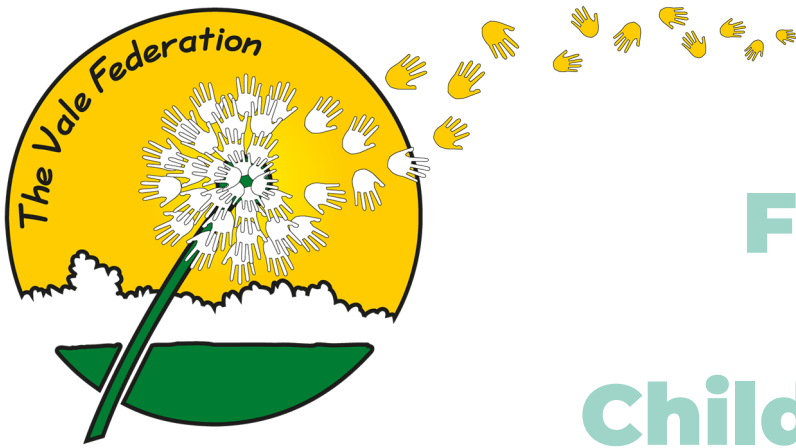
**The Vale Federation**

# Catering Department Update:



This contains answers to some of our frequently asked questions and common errors with meal orders.





# FREE CRICKET SESSIONS Children & Adults WITH DISABILITIES



## GAME CHANGERS CRICKET

FREE WEEKLY SESSIONS FOR CHILDREN AND YOUNG ADULTS  
WITH DISABILITIES, DIAGNOSED CONDITIONS AND IMPAIRMENTS

HAVE FUN | STAY FIT AND HEALTHY | MAKE FRIENDS  
DEVELOP SOCIAL SKILLS | BOOST CONFIDENCE  
AT **CUBLINGTON CRICKET CLUB**



SCAN HERE



SATURDAY 26TH APRIL 10:00 - 11:00  
**CUBLINGTON CRICKET CLUB**



SCAN HERE TO  
LEARN MORE ABOUT  
GAME CHANGERS







# PLACES WHERE KIDS EAT FREE (OR FOR £1) EASTER HOLIDAYS 2025

[moneysavingcentral.co.uk/kids-eat-free](https://moneysavingcentral.co.uk/kids-eat-free)



## **BURGER KING**

From Monday 7th - Sunday 20th April 2025, Kids Eat Free with every adult meal, via the app.

## **BILLS**

Kids eat free Mondays - Fridays, from Monday 7th - Friday 25th April 2025.

## **FARMHOUSE INNS**

2 kids eat FREE with one paying adult, Monday 7th - Friday 25th of April. Sign Up Required

## **TGI FRIDAYS**

Kids Eat Free When 'Stripes Rewards Members' purchase any adult meal (Via App)

## **ZIZZI**

Sunday 6th - Sunday 27th April 2025 kids eat free with every adult main. (excludes Saturdays)

## **CAFE EIGHTY NINE @ THE RANGE**

Kids eat free Sat 5th April - Mon 21st April 2025

## **YO! SUSHI**

Kids eat free all day (monday - friday) during all school holidays, when dining with an adult

## **SIZZLING PUBS**

Every Monday to Friday, 3 - 7pm, kids eat for £1.

## **ASDA**

Kids eat for £1 every, with no adult spend.

## **TRAVELODGE & PREMIER INN**

2 kids eat for FREE with 1 adult breakfast

## **GORDON RAMSEY RESTAURANTS**

Kids under 8 eat FREE all day, every day

## **WHITBREAD INNS**

2 kids eat for FREE with 1 adult breakfast

## **BEEFEATER & BREWERS FAYRE**

2 kids eat for FREE with 1 adult breakfast

## **IKEA**

Kids get a meal from 95p daily from 11am

## **PREZZO**

Kids receive a free, 3 course kids meal, everyday at Prezzo between 31st March - 27th April 2025

## **COCONUT TREE**

One child (under 10) eats free every day, 12pm - 6pm from Monday 7th - Sunday 27th April 2025

## **PIZZA HUT**

Kids eat free buffet from Monday 7th - Sunday 27th April, until 3pm daily with a £10 spend

## **PRETO**

Kids up to age 10 eat free all day, every day with paying adults at Preto in Half Terms

## **SAINSBURYS CAFES**

Kids eat for £1 with the purchase of an adult hot main. From 11:30am every day.

## **BELLA ITALIA**

Children eat for £1 with any adult main. The offer is valid 4-6pm Sun to Weds. All Day Thursdays

## **MORRISONS**

Kids Eat FREE all day, every day with a £5 spend

## **LAS IGUANAS**

Kids under 12 eat FREE with 'My Las Iguanas' App

## **TABLE TABLE**

2 Kids Eat free breakfast daily with 1 paying adult!

## **PAUSA CAFE @ DUNELM**

Kids eat FREE with every £4 spend after 3pm

## **HUNGRY HORSE**

Kids eat for £1 on Mondays

## **THE REAL GREEK**

Kids under 12 eat FREE Sundays with £10 spend

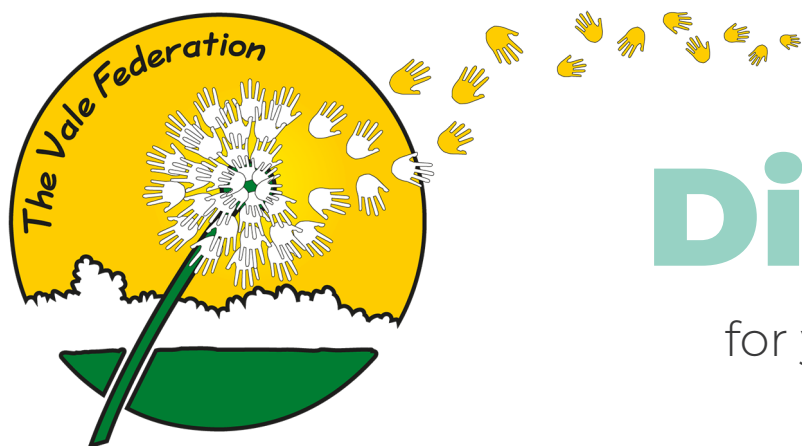
## **SA BRAINS PUBS**

Kids eat for £1 on Wednesdays

## **FUTURE INNS**

Under 5s eat for free with any adult meal.

Copyright of MONEY SAVING CENTRAL



# Discounts

for young people with SEND

**There are various schemes and charities which can help save money if your child has an additional or special need.**

## Max Card

[Max Card](#) is a national, local authority-commissioned discount initiative for looked after children and children with additional needs aged 0 to 19 years. The scheme enables families to visit hundreds of attractions across the UK at a free or discounted rate.

[Sign up](#) to the Disabled Children Register to receive a card for free.

## Merlin's Magic Wand

[Merlin's Magic Wand](#) offers magical days out at Merlin Entertainments attractions such as Legoland, Sea Life Centres and Madame Tussauds. They welcome applications on behalf of children aged 2 to 18 years with a confirmed serious illness/long term illness, disability or disadvantage.

## CEA Card

[CEA Card](#) enables a disabled cinema guest to receive a complimentary ticket for someone to go with them when they visit a participating cinema.

## Access Card

The [Access Card](#) translates your disability/impairment into symbols that highlight the barriers you face and the reasonable adjustments you might need. It then informs providers quickly and discreetly about the support you need and may gain you access to things like concessionary ticket prices and complex reasonable adjustments without having to go into loads of personal detail.

It costs £15 for three years.

For more local and national discount schemes visit the [Discounted sport, entertainment and travel page](#).





# Foodbanks

and food sharing

**Here is a list of Foodbanks in Buckinghamshire. To get a foodbank referral and vouchers speak to your Family Centre, Health Visitor or Social Worker or local Citizens Advice office.**

**You can also use the [Trussell Trust's website](#) to find its 400-strong network of Foodbanks.**

## Aylesbury - Store House

[Storehouse](#) helps anyone in need by providing food and other items like furniture and clothing to people on low incomes, benefits or who are in temporary hardship.

**Areas covered: Aylesbury Vale area.**

**Referral or voucher needed.**

## Aylesbury Foodbank

[Aylesbury Foodbank](#) provides three days' nutritionally balanced emergency food and support to people with a voucher or referral.

**Areas covered: Aylesbury.**

**Referral or voucher needed.**

## FoodCycle Aylesbury

[FoodCycle](#) Aylesbury welcomes anyone to attend as a guest and enjoy a FREE hot meal. No need to book. Just turn up on the day!

Come and enjoy company and conversation with others from your local area over a delicious meal, prepared with care by FoodCycle volunteers.

**Areas covered: Aylesbury and the surrounding areas.**

**No Referral or voucher needed.**

## Berryfields Community Store

Berryfields Community Store is open each Thursday morning from 10.30am for anyone in a financial crisis. For a £5 donation, you can choose 25 items of food including fresh meat, vegetables and household items (depending on available stock).

The address is Roman Park, Sir Henry Lee Crescent, HP18 0YT. For further information please contact [help@romanparktrust.org.uk](mailto:help@romanparktrust.org.uk).

**Areas covered: Aylesbury**

**No referral or voucher needed**

## Beaconsfield - Hope Community Drop-in

[Hope Community Drop-in](#) is a drop-in service where local people referred by doctors or social services can receive an emergency food package. The drop-in runs every Friday at the Holts spur Youth Club building from 8:45 am to midday.

**Areas covered: Beaconsfield and neighbouring villages.**

**Referral or voucher needed.**

## Burnham - Care and Share Food Distribution Project

Burnham Health Promotion Trust (BHPT) [Care and Share food distribution project](#) is a collaborative community initiative which offers pre-filled food bags and a voucher to buy fresh fruit and vegetables.

**Voucher needed.**



# Foodbanks

and food sharing

## Chiltern - Chiltern Foodbank

**Chiltern Foodbank** provides three days' nutritionally balanced emergency food and support to people with a voucher or referral.

**Areas covered:** *The Chiltern District and nearby surrounding areas such as Wendover.*  
**Referral or voucher needed.**

## Chesham Community Fridge

**Chesham Community Fridge** distributes free surplus food that is good to eat to anyone who comes to the Fridge. There is no referral or voucher needed. Chesham Community Fridge is open Wednesday and Saturday mornings in the yard behind Broadway Baptist Church, Chesham.

**Areas covered:** *Chesham.*  
**No referral or voucher needed.**

## High Wycombe - One Can

**One Can** provide free, nutritious food parcels to those deemed 'in crisis' by their partner organisations.

**Areas served:** *High Wycombe, Buckinghamshire and surrounding areas.*  
**Referral or voucher needed.**

## Wycombe Community Fridge

**Wycombe Community Fridge** shares food locally with anyone and everyone regardless of income or means. No referrals are needed.

**No referral or voucher needed.**

## Wycombe Food Hub

**Wycombe Food Hub** collects crates of unsold food like bread, fruit, vegetables, chilled and frozen foods every week from supermarkets, farms and shops. The products are then made available to people unable to buy food.

**No referral or voucher needed but food is available for a small donation.**

## Milton Keynes - The MK Foodbank

**The MK Foodbank** provide food parcels that can be picked up from one of their serving sessions located around the city. Clients can receive a food parcel 5 times within a rolling 12-month period.

**Areas served:** *Milton Keynes.*  
**Referral or voucher needed.**

## Thame Food Bank

**Thame foodbank** provides emergency supplies of essential food items to those in the community who are struggling financially.

**Areas covered:** *Thame.*  
**Referral needed.**

## Wendover

### - Wendover Free Church Foodbank

**Wendover Free Church Foodbank** provides food parcels for the local area.

**Areas served:** *Wendover and neighbouring villages.*  
**Referral or voucher needed.**

## Wing Foodbank

**Areas covered:** *Wing*  
**No referral needed.**

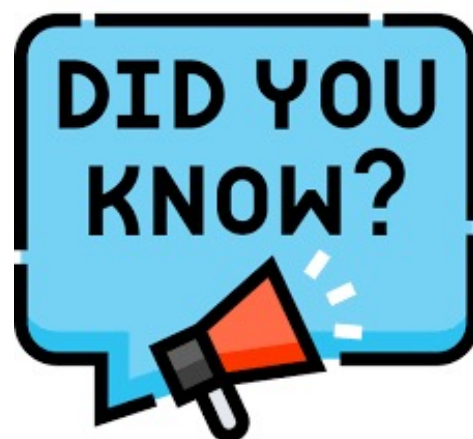
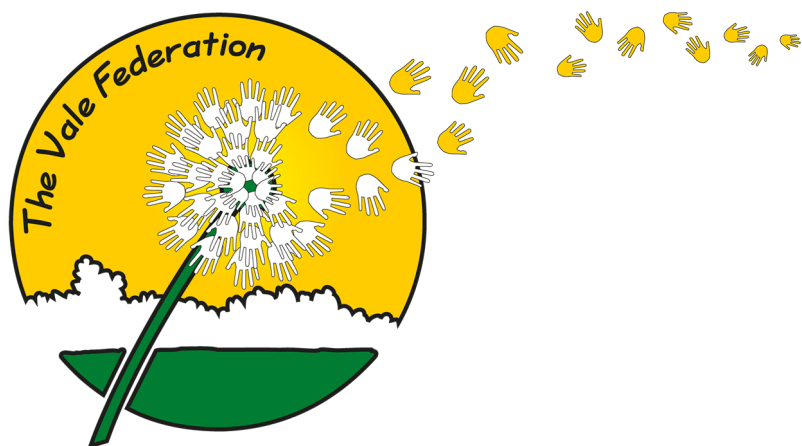
## Not in Buckinghamshire but nearby

### Rickmansworth Foodbank

**Rickmansworth Foodbank** provides food parcels for the local area.

**Areas served:** *Rickmansworth and nearby towns and villages.*  
**Referral or voucher needed.**





# We offer exclusive hire of our soft play centre!

Soft Play - 3 hour hire time

Mon- Fri £100 plus VAT - School holidays only

Sat - Sun £112.50 plus VAT

Additional hours on request

Capacity: up to 20, Maximum number of children on the equipment at one time is 5. No children over 8 years old

Includes: Exclusive Use/Toilets/Tables & Chairs

**For further information please contact**  
**[facilitiesbookings@thevalefederation.com](mailto:facilitiesbookings@thevalefederation.com)**